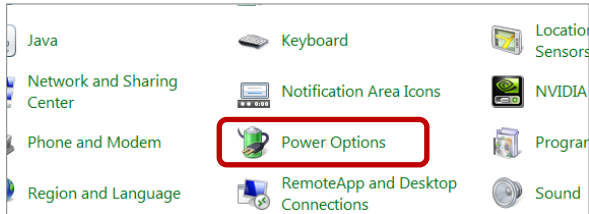


Prepare Your Computer for FireNEX-5000

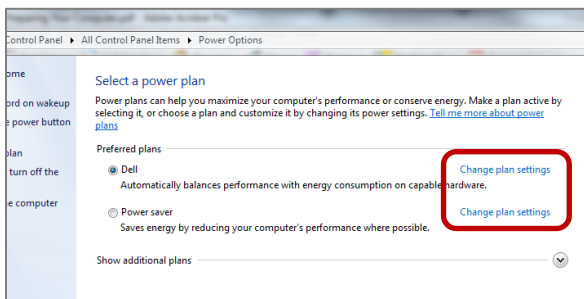
1. Disable “USB Suspend Mode”
2. Disable “device turn off” in HUB power management

Disable “USB Suspend Mode”

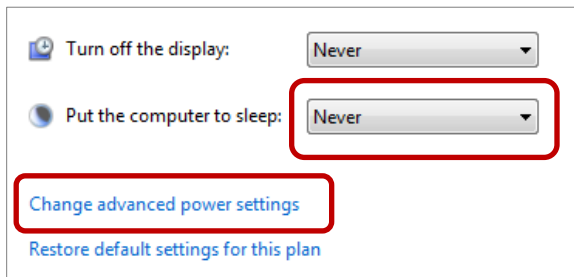
1. Open Control Panel. Open “Power Options”



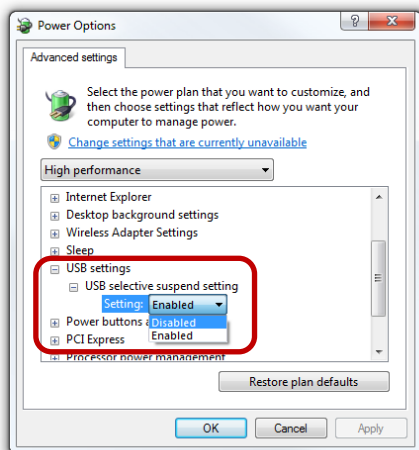
2. Click on “Change Plan Settings”



3. Select “Never” for “Put the computer to sleep” for all the configurations presented.



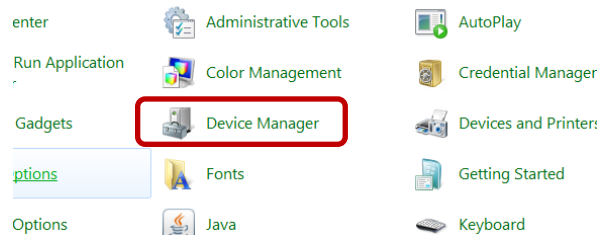
5. Click “Change advanced power settings”.
Expand “USB settings”
Expand “USB selective suspend setting”



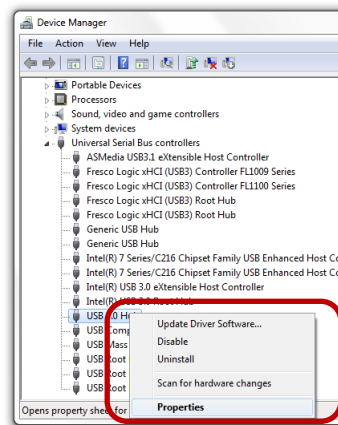
Select “Disabled”, and Click “OK”

Disable USB hub power management

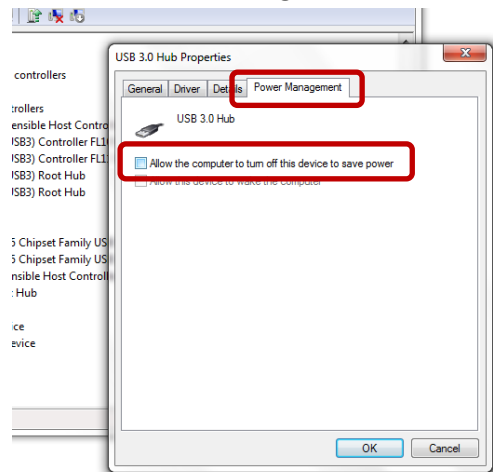
1. Open Device Manager



2. Right click on “USB Root Hub” and select “Properties”



3. Click on “Power Management”



4. Un-Check the “Allow the computer to turn off this device to save power” option
5. Repeat step 2 to 4 for all “Generic SuperSpeed USB Hub”, “Generic USB Hub”, “USB Root Hub”, and USB Root Hub (xHCI)” show up in your Device Manager.