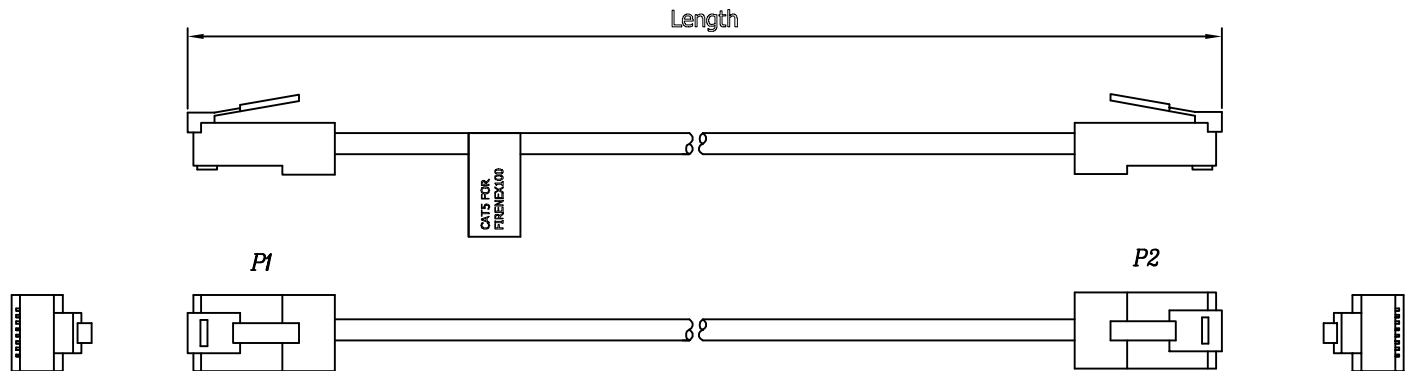


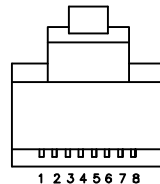
Newnex Proprietary
 THIS DOCUMENT AND THE DATA DISCLOSED HEREIN
 OR WITHIN IS NOT TO BE REPRODUCED, USED, OR
 DISCLOSED IN WHOLE OR PART TO ANYONE WITHOUT
 THE WRITTEN PERMISSION OF NEWNEX

Customer Signature	DATE:	Comment



RJ45 FireNEX repeater Cable pinouts

P1	SIGNAL NAME	COLOR	P2
1	TPB+	O/W	7
2	TPB-	O	8
3	-	G/W	3
4	+12 V	B	4
5	GND	B/W	5
6	-	G	6
7	TPA+	Br/W	1
8	TPA-	Br	2



NOTE:
 1.CABLE : RJ-45 CABLE , PVC JACKET.
 2.CONNECTOR: RJ-45 CONNECTOR

Newnex Technology Corp.			
UNLESS OTHERWISE SPECIFIED DIMENSIONS ARE IN MILLIMETER TOLERANCES ARE:		MATERIAL	TITLE:
FRACTIONS DECIMALS ANGLES ± NA .X± 0.2 ± 0°S .XX± 0.1 .XXX± 0.05		PROJ	CAT5 CABLE ONLY FOR FIRENEX100 REPEATER
SCALE:	REV.	DRAWN BY: Kenny hu	APPROVED BY:
PART NUMBER:	DATE: 09/08/2004	CHECK BY: Sam Lju	SHEET OF

* 100% OPEN,SHORT,MISWIRE TESTING